



Up-to-date Questions and Answers from authentic resources to improve knowledge and pass the exam at very first attempt. ----- Guaranteed.



4A0-C04 Dumps
4A0-C04 Braindumps
4A0-C04 Real Questions
4A0-C04 Practice Test
4A0-C04 Actual Questions



Nokia

4A0-C04

Nokia NRS II Composite



<https://killexams.com/pass4sure/exam-detail/4A0-C04>

Question: 89

In an IP datagram, which of the following fields identifies the receiving application?

- A. The protocol field of the transport layer header.
- B. The port field of the transport layer header.
- C. The protocol field of the network layer header.
- D. The port field of the network layer address.

Answer: B

Question: 90

On an Nokia 7750 SR, what is the recommended approach for making sure that MTUs between a VPLS and its spoke IES termination match?

- A. Set the service MTU of the VPLS to match the IES MT
- C. Set the ip-mtu of the IES to match the service MTU of the VPL
- E. Set the SDP MTU of the IES to match the SDP MTU of the VPL
- G. Set the MTU of the IES's network port to match the service MTU of the VPL

Answer: B

Question: 91

Which of the following cannot be used as a matching criterion in route policy statements?

- A. Source IP address
- B. TCP source port
- C. Prefix list
- D. Protocol type

Answer: D

Question: 92

An IS-IS TE enabled router has an interface on a 500Mbps link and it is configured with a 25% subscription.

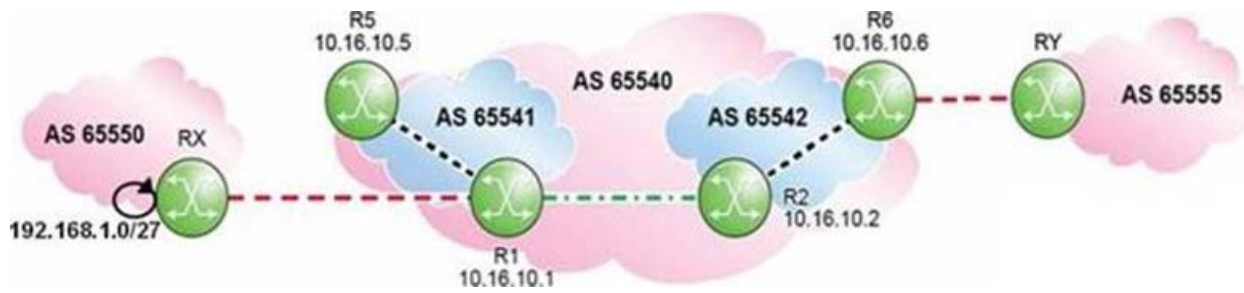
If this interface is not used by any LSPs. what value will be shown in the Reservable Bandwidth sub-TLV?

- A. 125 Mbps
- B. 500 Mbps
- C. 625 Mbps
- D. 2000 Mbps

Answer: A

Question: 93

Click the exhibit.



Which of the following is a valid confederation configuration for Router R2?

- ☐ A. R2>config>router# info

autonomous-system 65540
confederation 65540 members 65541 65542
- ☐ B. R2>config>router# info

autonomous-system 65542
confederation 65540 members 65541
- ☐ C. R2>config>router# info

autonomous-system 65542
confederation 65540 members 65541 65542
- ☐ D. R2>config>router# info

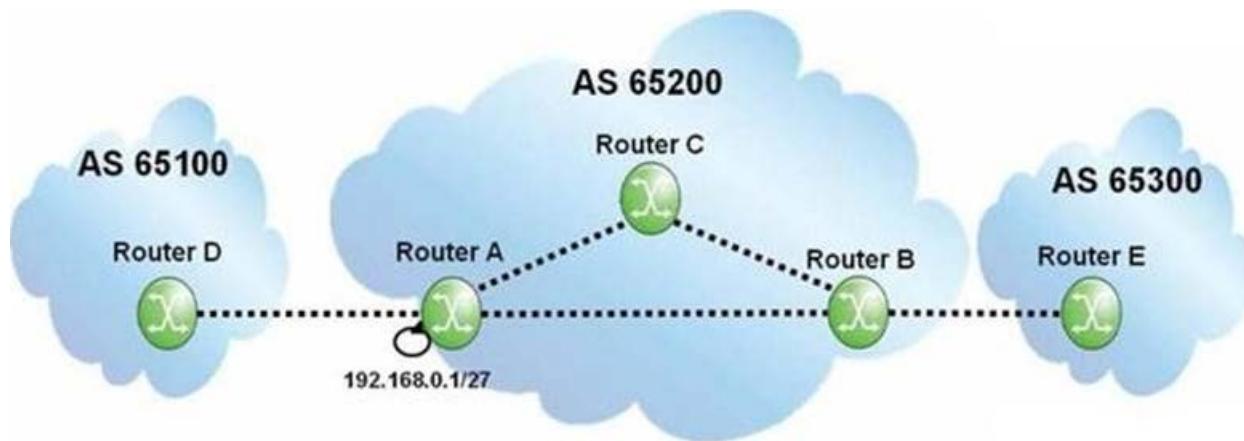
autonomous-system 65540
confederation 65542 members 65541

- A. Option A
- B. Option B
- C. Option C
- D. Option D

Answer: C

Question: 94

Click the exhibit.



If router A originates a BGP route for prefix 192.168.0.1/27, what will the update contain when it reaches router B?

- A. AS Path of 65200, Next Hop of router A, Origin of IG
- C. AS Path of 65200, Next Hop of router A, Origin of incomplete.
- D. Null AS Path, Next Hop of router A, Origin of IG
- F. Null AS Path, Next Hop of router A, Origin of incomplete.

Answer: C

Question: 95

Which of the following about MPLS shortcuts for IGP on an Nokia 7750 SR is FALSE?

- A. An IGP route takes priority over a transport tunnel.
- B. Both LDP and RSVP-TE based tunnels can be used.
- C. MPLS tunnels can be used to resolve the prefixes learned via IG
- E. Multiple MPLS tunnels can be installed in the FI

Answer: A

Question: 96

What happens by default on an Nokia 7750 SR when a VPLS accepts a tagged frame at the ingress SAP 1/1/1:100?

- A. The FCS is verified and kept in the customer frame. The VLAN tag is kept and transported over the network.
- B. The FCS is verified and kept in the customer frame. The VLAN tag is removed for transport over the network.
- C. The FCS is verified and removed from the frame. The VLAN tag is kept for transport over the network.
- D. The FCS is verified and removed from the frame. The VLAN tag is removed for transport over the network.

Answer: D

Question: 97

Which of the following about VPRN VRF tables is FALSE?

- A. A PE uses the same VRF table for all the VPRN services on it.
- B. A PE uses a VRF to maintain forwarding information.
- C. Information for VRFs can be advertised between PEs by MP-BG
- E. A PE uses a VRF to route traffic to CEs.

Answer: A

Question: 98

A BGP session is in OpenConfirm state .

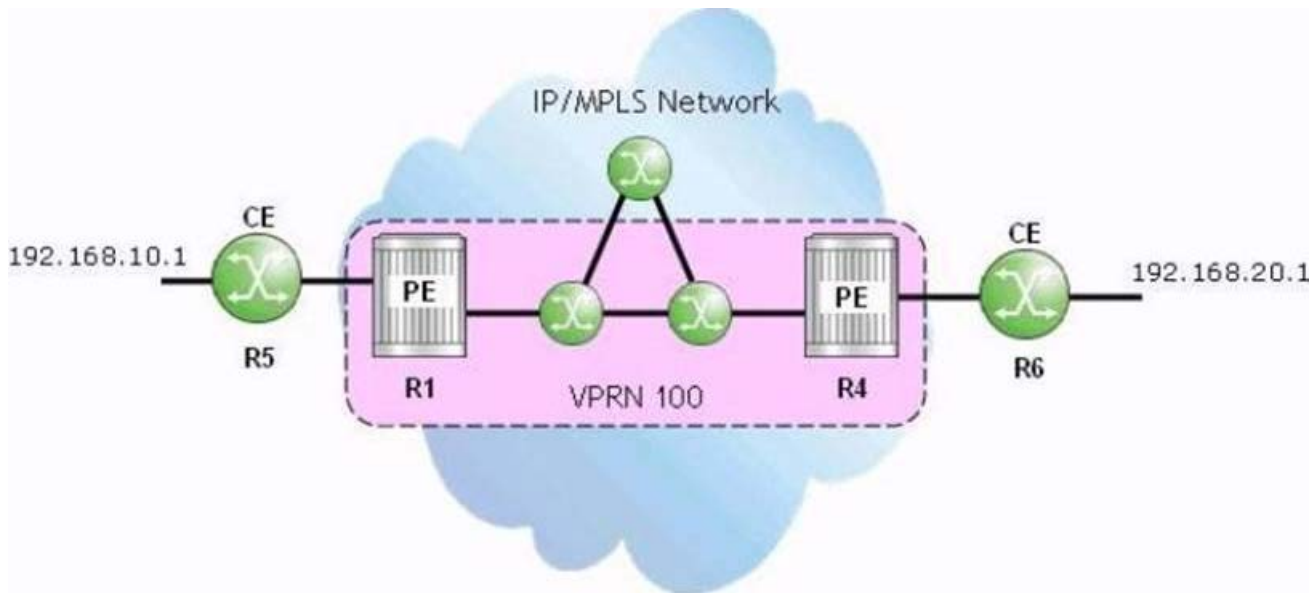
Which of the following messages must be received to transition to Established state?

- A. Update
- B. Open
- C. Notification
- D. Keepalive

Answer: D

Question: 99

Click the exhibit.



The CEs use BGP and export policies to advertise their local prefixes with the VPRN on their PEs.

If the VPRN is functioning properly, which of the following commands will succeed when performed on router R1?

- A. "ping 192.168.20.1"
- B. "oam vprn-ping 100 source 192.168.10.1 destination 192.168.20.1"
- C. "oam vprn-ping 100 source 192.168.20.1 destination 192.168.10.1"
- D. "ping 10.10.10.6" (router R6's system IP)

Answer: B

Question: 100

Which of the following statements best describes the function of an OSPF Type 4 LSA?

- A. A Type 4 LSA is originated by an ABR to describe a route to an ASBR to routers outside the area.
- B. A Type 4 LSA is originated by an ASBR to describe a route to itself to routers outside the area.
- C. A Type 4 LSA is originated by an ABR that is connected to a stub area. The LSA is injected into the backbone area to provide routing information.
- D. A Type 4 LSA is originated by an ABR that is connected to a stub area. The LSA is injected into the stub area to provide routing information.

Answer: A

Question: 101

Click the exhibit.

R1# show router 100 fib 1		
=====		
FIB Display		
=====		
Prefix		Protocol
NextHop		

10.1.5.0/24		
10.1.5.0 (R1-R5)		
10.6.4.0/24		
10.10.10.4 (VPRN Label:131065 Transport:LDP)		
10.10.10.5/32		
10.1.5.5 Indirect (R1-R5)		
10.10.10.6/32		
10.10.10.4 (VPRN Label:131065 Transport:LDP)		
192.168.10.0/24		
10.1.5.5 Indirect (R1-R5)		
192.168.20.0/24		
10.10.10.4 (VPRN Label:131065 Transport:LDP)		?

Total Entries : 6		

The output is from PE router R1 about VPRN service 100.

From which protocol did router R1 learn the prefix 192.168.20.0/24?

- A. LDP
- B. BGP
- C. MP-BGP
- D. MPLS

Answer: C



SAMPLE QUESTIONS

*These questions are for demo purpose only. **Full version** is up to date and contains actual questions and answers.*

Killexams.com is an online platform that offers a wide range of services related to certification exam preparation. The platform provides actual questions, exam dumps, and practice tests to help individuals prepare for various certification exams with confidence. Here are some key features and services offered by Killexams.com:

Actual Exam Questions: *Killexams.com provides actual exam questions that are experienced in test centers. These questions are updated regularly to ensure they are up-to-date and relevant to the latest exam syllabus. By studying these actual questions, candidates can familiarize themselves with the content and format of the real exam.*

Exam Dumps: *Killexams.com offers exam dumps in PDF format. These dumps contain a comprehensive collection of questions and answers that cover the exam topics. By using these dumps, candidates can enhance their knowledge and improve their chances of success in the certification exam.*

Practice Tests: *Killexams.com provides practice tests through their desktop VCE exam simulator and online test engine. These practice tests simulate the real exam environment and help candidates assess their readiness for the actual exam. The practice tests cover a wide range of questions and enable candidates to identify their strengths and weaknesses.*

Guaranteed Success: *Killexams.com offers a success guarantee with their exam dumps. They claim that by using their materials, candidates will pass their exams on the first attempt or they will refund the purchase price. This guarantee provides assurance and confidence to individuals preparing for certification exams.*

Updated Content: *Killexams.com regularly updates its question bank and exam dumps to ensure that they are current and reflect the latest changes in the exam syllabus. This helps candidates stay up-to-date with the exam content and increases their chances of success.*

Technical Support: *Killexams.com provides free 24x7 technical support to assist candidates with any queries or issues they may encounter while using their services. Their certified experts are available to provide guidance and help candidates throughout their exam preparation journey.*

For More exams visit <https://killexams.com/vendors-exam-list>
Kill your exam at First Attempt....Guaranteed!