



*Up-to-date Questions and Answers from authentic resources to improve knowledge and pass the exam at very first attempt. ----- Guaranteed.*



4A0-103 Dumps  
4A0-103 Braindumps  
4A0-103 Real Questions  
4A0-103 Practice Test  
4A0-103 Actual Questions



**Alcatel-Lucent**

**4A0-103**

*Alcatel-Lucent Multi Protocol Label Switching*



**QUESTION: 232**

Which LSAtype is used for OSPF-TE?

- A. Type 8 LSA—Link Local LSA
- B. Type 9 LSA — Link local Opaque LSA
- C. Type 10 LSA — Area local Opaque LSA
- D. Type 11 LSA —AS Opaque LSA

**Answer: C**

**QUESTION: 233**

Which of the following about LDP sessions is TRUE?

- A. Frame mode requires multiple sessions between peers.
- B. The lower transport address initiates the session.
- C. Established LDP sessions run over a TCP connection.
- D. An LDP session is established immediately after Init messages are exchanged between peers.

**Answer: C**

**QUESTION: 234**

Click on the exhibit.

```
configure router policy-options
begin
prefix-list "officeA_subnet"
    prefix 192.168.1.0/24 longer
exit
policy-statement "LDP_export"
    entry 10
        from
            protocol direct
            prefix-list "officeA_subnet"
        exit
        action accept
    exit
exit
commit
```

This policy is applied on a router as an LDP export policy and an LDP session has been established between this router and its neighboring router. In addition to the FECs learned from its neighbors, what additional FECs will appear in this router's LIB?

- A. All FECs that are in the 192.168.1.0/24 address space.
- B. Local FECs that are in the 192.168.1.0/24 address space.
- C. All FECs that are not in the 192.168.1.0/24 address space.
- D. All FECs except the local FECs that are in the 192.168.1.0/24 address space.

**Answer:** B

**QUESTION:** 235

Initially, all ports on an Alcatel-Lucent 7750 SR have 10Gbps bandwidth. RSVP configuration limits reservable bandwidth to 30 percent on all interfaces. An LSP is signaled reserving 1 Gbps bandwidth. How much unreserved bandwidth is left on the interface?

- A. 10 Gbps
- B. 7 Gbps
- C. 3 Gbps
- D. 2 Gbps

**Answer:** D

**QUESTION:** 236

Fill in the blanks: A \_\_\_\_\_ device has all interfaces inside the provider domain, and a \_\_\_\_\_ device has at least one interface outside the provider domain.

- A. PE, P
- B. P, PE
- C. PE, CE
- D. CE, PE
- E. CE, P

**Answer:** B

**QUESTION:** 237

Which of the following regarding per-platform label space is TRUE?

- A. A separate label is used for each interface on which the FEC is advertised.

- B. A single label is assigned to a FEC for all interfaces on the same router,
- C. It is typically used when the device has ATM or Frame Relay interfaces.
- D. It uses more label resources than a per-interface label space.

**Answer:** B

**QUESTION:** 238

Which of the following about RSVP-TE summary refresh messages is TRUE?

- A. They list the RSVP session names that the router is refreshing,
- B. They list the Message IDs that the router is refreshing,
- C. They list the Tunnel IDs that the router is refreshing.
- D. They list the LSP IDs that the router is refreshing.

**Answer:** B

**QUESTION:** 239

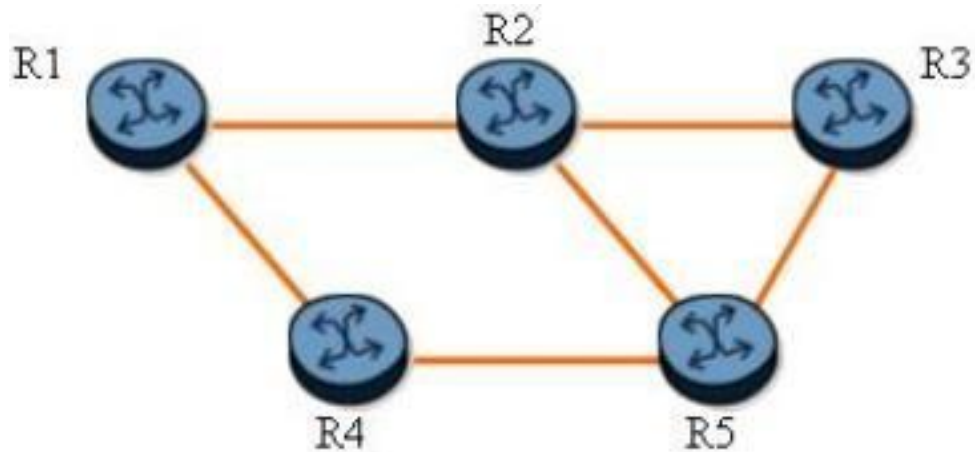
How does a DMP inform the downstream routers that it has merged detour tunnels?

- A. The DMP sends the DMP\_Object in each detour's PATH messages.
- B. The DMP summarizes PATH messages, giving each detour its own MSGJD.
- C. The DMP identifies itself as the previous hop in each detour's PATH message.
- D. The DMP sends a single PATH message containing the merged DETOUR\_Objects.

**Answer:** D

**QUESTION:** 240

Click on the exhibit.



An LSP traverses the path R1-R2-R3. With one-to-one fast reroute enabled, which router becomes a DMP for the detour tunnels?

- A. Router R1
- B. Router R2
- C. Router R3
- D. Router R4
- E. Router R5

**Answer:** E

**QUESTION:** 241

Which of the following is TRUE when the explicit null is implemented?

- A. The penultimate router will forward packets to the eLER, based on the IP header.
- B. The eLER will receive packets with a top label value of 0.
- C. The eLER will receive packets with a top label value of 3.
- D. The penultimate router will pop the top label from the packets.

**Answer:** B

**QUESTION:** 242

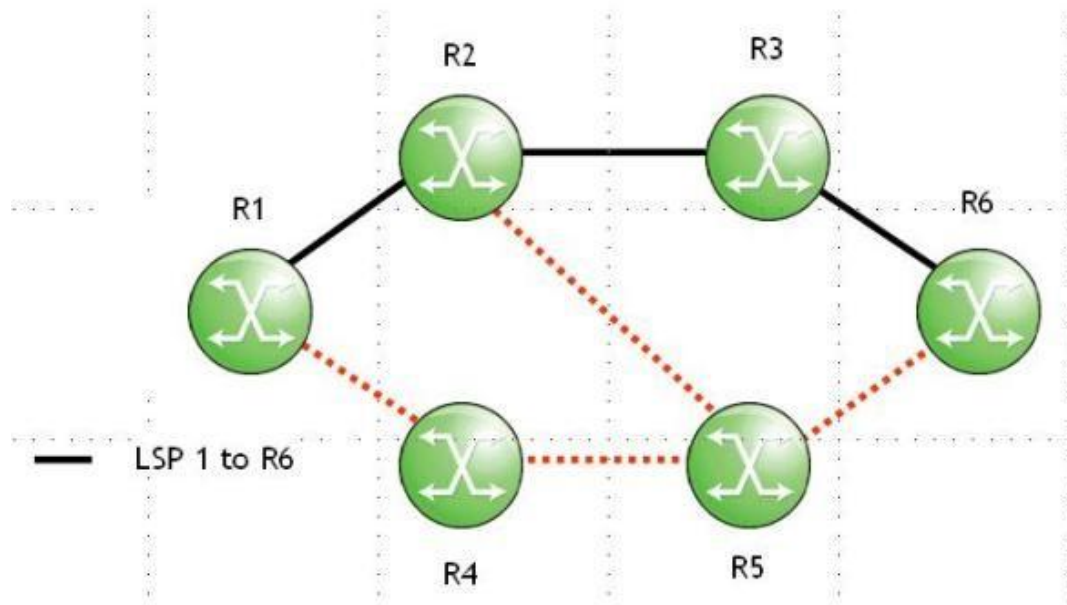
Which MPLS mode saves only active label mappings received from peer LSRs?

- A. Conservative label retention
- B. Liberal label retention
- C. Downstream on demand
- D. Downstream unsolicited

**Answer:** A

**QUESTION:** 243

Click on the exhibit.



RSVP session state for LSP 1 has timed out on router R3. Which of the following actions will router R3 initiate to clear the RSVP session?

- A. Send a PATH Tear message toward router R6.
- B. Send a PATH Tear message toward router R1.
- C. Send a PATH Error message toward router R6.
- D. Send a PATH Error message toward router R1.

**Answer:** D

**QUESTION:** 244

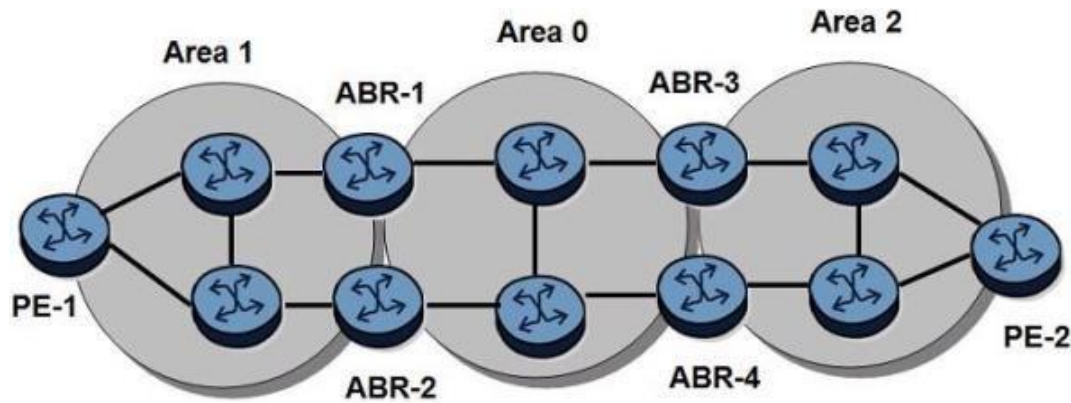
Which of the following regarding MPLS encapsulation for VPRN services is TRUE?

- A. The customer's Layer 3 header is removed at the iLER.
- B. The customer's Layer 2 header is removed at the iLER.
- C. The customer's Layer 3 header is removed at the eLER.
- D. The customer's Layer 2 header is removed at the eLER.

**Answer:** A

**QUESTION:** 245

Click on the exhibit.



An LDP-over-RSVP tunnel is established between PE-1 and PE-2. Which of the following is NOT required to protect the LDP-over-RSVP tunnel?

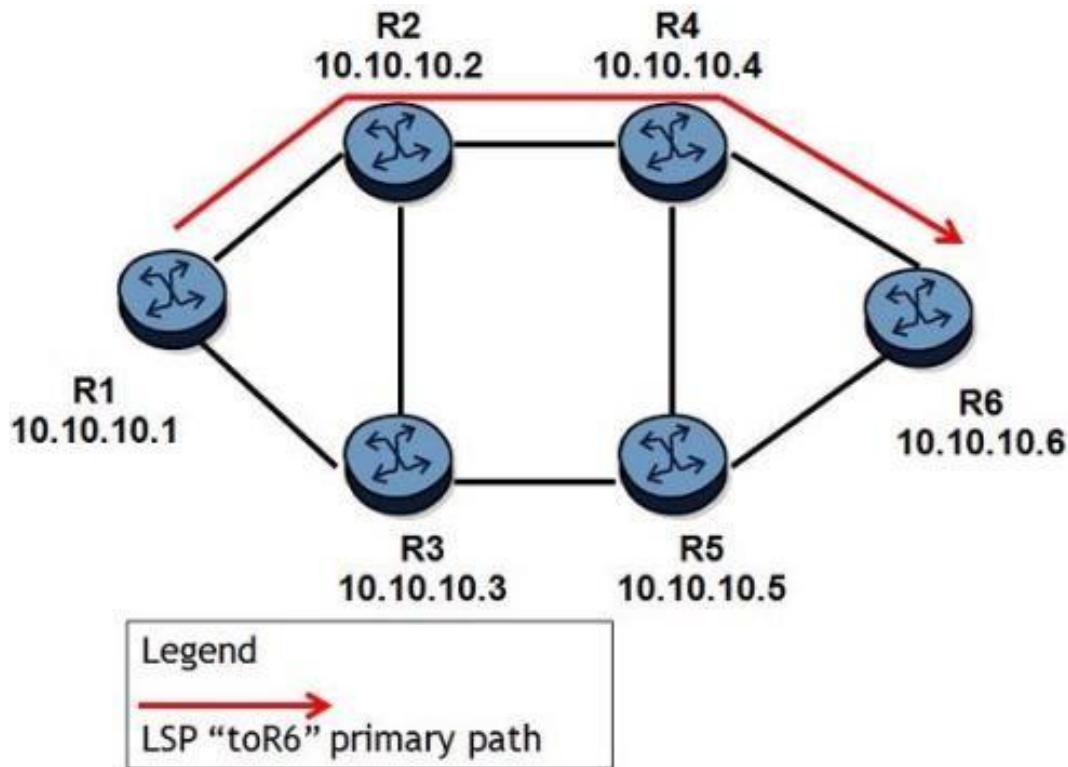
- A. PE-1 requires T-LDP sessions to both ABR-1 and ABR-2.
- B. PE-1 requires a full mesh of RSVP-TE LSPs to all routers in area 1.
- C. ABR-1 requires T-LDP sessions to all ABRs in area 0.
- D. PE-1 requires fast reroute enabled on all RSVP-TE LSPs.

**Answer:** B

**QUESTION:** 246

Click on the exhibit.





An LSP traverses R1-R2-R4-R6 and one-to-one fast reroute with link protection is enabled. All links have the same cost. Which of the following about DMP and MP is TRUE?

- A. R3 and R5 become DMPs; R6 becomes MP.
- B. R3 and R5 become DMPs; R4 becomes MP.
- C. R3, R5, and R6 become DMPs; R4 becomes MP.
- D. R1, R3, and R5 become DMPs; R4 and R6 become MPs.

**Answer:** A

#### **QUESTION:** 247

Which of the following is NOT a characteristic of MPLS?

- A. It provides the ability to establish connection oriented paths over a connectionless IP network.
- B. It provides a mechanism to engineer network traffic patterns independently of IP routing tables.
- C. It will work over most physical layer protocols.
- D. It can use GRE tunnels to transport data from many different protocols over an IP network.

**Answer:** D



**QUESTION: 248**

Which of the following about an ERO in an RSVP PATH message is FALSE?

- A. ERO is used by downstream routers to determine the next-hop for the LSP.
- B. ERO contains label information used to signal an LSP path.
- C. ERO is not always present in the PATH message.
- D. Each downstream router updates information inside the ERO.

**Answer: B**

**QUESTION: 249**

Which of the following is NOT an application of MPLS?

- A. Enabling VPNs
- B. Enabling traffic engineering
- C. Enabling network security
- D. Enhancing network resiliency

**Answer: C**



# SAMPLE QUESTIONS

*These questions are for demo purpose only. **Full version** is up to date and contains actual questions and answers.*

*Killexams.com is an online platform that offers a wide range of services related to certification exam preparation. The platform provides actual questions, exam dumps, and practice tests to help individuals prepare for various certification exams with confidence. Here are some key features and services offered by Killexams.com:*

**Actual Exam Questions:** *Killexams.com provides actual exam questions that are experienced in test centers. These questions are updated regularly to ensure they are up-to-date and relevant to the latest exam syllabus. By studying these actual questions, candidates can familiarize themselves with the content and format of the real exam.*

**Exam Dumps:** *Killexams.com offers exam dumps in PDF format. These dumps contain a comprehensive collection of questions and answers that cover the exam topics. By using these dumps, candidates can enhance their knowledge and improve their chances of success in the certification exam.*

**Practice Tests:** *Killexams.com provides practice tests through their desktop VCE exam simulator and online test engine. These practice tests simulate the real exam environment and help candidates assess their readiness for the actual exam. The practice tests cover a wide range of questions and enable candidates to identify their strengths and weaknesses.*

**Guaranteed Success:** *Killexams.com offers a success guarantee with their exam dumps. They claim that by using their materials, candidates will pass their exams on the first attempt or they will refund the purchase price. This guarantee provides assurance and confidence to individuals preparing for certification exams.*

**Updated Content:** *Killexams.com regularly updates its question bank and exam dumps to ensure that they are current and reflect the latest changes in the exam syllabus. This helps candidates stay up-to-date with the exam content and increases their chances of success.*

**Technical Support:** *Killexams.com provides free 24x7 technical support to assist candidates with any queries or issues they may encounter while using their services. Their certified experts are available to provide guidance and help candidates throughout their exam preparation journey.*

For More exams visit <https://killexams.com/vendors-exam-list>  
Kill your exam at First Attempt....Guaranteed!