



Up-to-date Questions and Answers from authentic resources to improve knowledge and pass the exam at very first attempt. ----- Guaranteed.



301b Dumps
301b Braindumps
301b Real Questions
301b Practice Test
301b Actual Questions



F5-Networks

301b

BIG-IP Local Traffic Manager (LTM) Specialist : Maintain & Troubleshoot



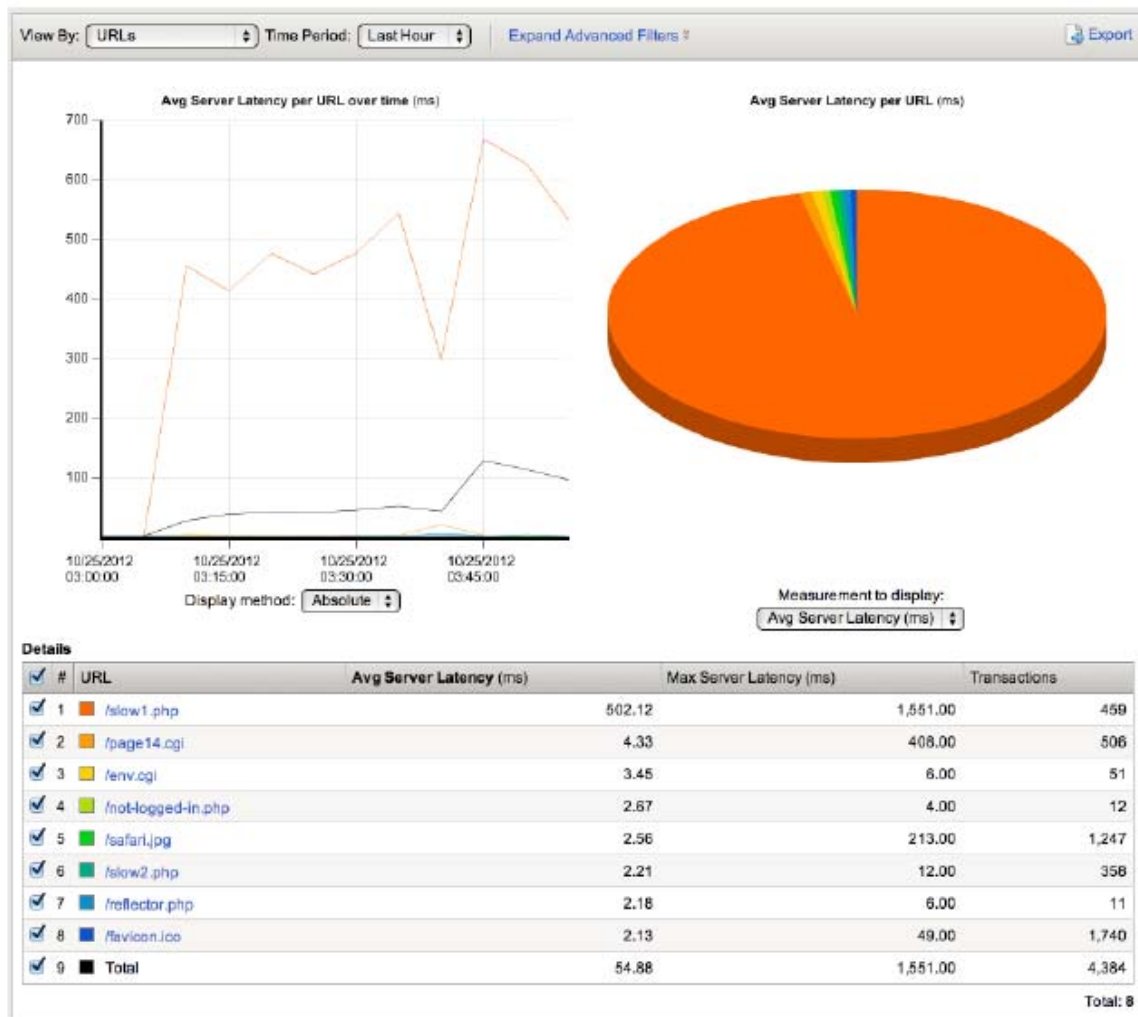
<https://killexams.com/pass4sure/exam-detail/301b>

D. The configuration reload request caused the config to reload and the device to failover.

Answer: B

QUESTION: 38

-- Exhibit --



-- Exhibit --

Refer to the exhibit.

Which URL should be reported to the server/application team as getting user-visible errors?

A. /env.cgi

B. /page14.cgi
C. /reflector.php
D. /browserspecific.html

Answer: B

QUESTION: 39

-- Exhibit --

PACKET CAPTURE THROUGH LTM DEVICE - CONNECTING TO VIRTUAL SERVER

EXTERNAL VLAN

```
14:35:34.633300 IP 10.1.5.100.49857 > 10.3.20.20.80: F 1356:1356(0) ack 4557 win 16425
14:35:34.633315 IP 10.3.20.20.80 > 10.1.5.100.49857: . ack 1357 win 5735
14:35:34.634996 IP 10.3.20.20.80 > 10.1.5.100.49857: F 4557:4557(0) ack 1357 win 5735
14:35:34.636065 IP 10.1.5.100.49857 > 10.3.20.20.80: . ack 4558 win 16425
14:35:39.596671 IP 10.1.5.100.49862 > 10.3.20.20.80: S 2002327087:2002327087(0) win 8192 <msg 1460,nop,wscale 2,nop,nop,ackOK>
14:35:39.596745 IP 10.3.20.20.80 > 10.1.5.100.49862: S 14638127:14638127(0) ack 2002327088 win 4380 <msg 1460,nop,wscale 0,ackOK,eol>
14:35:39.598058 IP 10.1.5.100.49862 > 10.3.20.20.80: . ack 1 win 16425
14:35:39.599165 IP 10.1.5.100.49862 > 10.3.20.20.80: P 1:339(338) ack 1 win 16425
14:35:39.599187 IP 10.3.20.20.80 > 10.1.5.100.49862: . ack 339 win 4718
14:35:39.603044 IP 10.3.20.20.80 > 10.1.5.100.49862: P 1:342(341) ack 339 win 4718
14:35:39.603631 IP 10.1.5.100.49862 > 10.3.20.20.80: P 339:658(319) ack 342 win 16399
14:35:39.643864 IP 10.3.20.20.80 > 10.1.5.100.49862: . ack 658 win 5037
14:35:39.646203 IP 10.3.20.20.80 > 10.1.5.100.49862: P 342:1747(1405) ack 658 win 5037
14:35:39.653026 IP 10.1.5.100.49862 > 10.3.20.20.80: P 658:1007(349) ack 1747 win 16425
14:35:39.653072 IP 10.3.20.20.80 > 10.1.5.100.49862: . ack 1007 win 5386
14:35:39.654011 IP 10.1.5.100.49863 > 10.3.20.20.80: S 1569233346:1569233346(0) win 8192 <msg 1460,nop,wscale 2,nop,nop,ackOK>
14:35:39.654095 IP 10.3.20.20.80 > 10.1.5.100.49863: S 1598764866:1598764866(0) ack 1569233347 win 4380 <msg 1460,nop,wscale 0,ackOK,eol>
14:35:39.655994 IP 10.3.20.20.80 > 10.1.5.100.49862: P 1747:3152(1405) ack 1007 win 5386
14:35:39.655966 IP 10.1.5.100.49863 > 10.3.20.20.80: . ack 1 win 16425
14:35:39.658973 IP 10.1.5.100.49862 > 10.3.20.20.80: P 1007:1356(349) ack 3152 win 16079
14:35:39.658989 IP 10.3.20.20.80 > 10.1.5.100.49862: . ack 1356 win 5735
14:35:39.660064 IP 10.3.20.20.80 > 10.1.5.100.49862: P 3152:4557(1405) ack 1356 win 5735
14:35:39.675355 IP 10.1.5.100.49862 > 10.3.20.20.80: . ack 4557 win 16425
```

INTERNAL VLAN

```
14:35:34.633317 IP 192.168.1.5.49857 > 192.168.1.100.80: F 2516122805:2516122805(0) ack 1308034121 win 8936
14:35:34.634973 IP 192.168.1.100.80 > 192.168.1.5.49857: F 1:1(0) ack 1 win 252
14:35:34.634993 IP 192.168.1.5.49857 > 192.168.1.100.80: . ack 2 win 8936
14:35:39.598151 IP 192.168.1.5.49862 > 192.168.1.100.80: S 2437134798:2437134798(0) win 4380 <msg 1460,nop,wscale 0,ackOK,eol>
14:35:39.600919 IP 192.168.1.100.80 > 192.168.1.5.49862: S 4240953911:4240953911(0) ack 2437134799 win 8192 <msg 1460,nop,wscale 2,nop,nop,ackOK>
14:35:39.601215 IP 192.168.1.5.49862 > 192.168.1.100.80: . ack 1 win 4380
14:35:39.601221 IP 192.168.1.5.49862 > 192.168.1.100.80: P 1:339(338) ack 1 win 4380
14:35:39.603029 IP 192.168.1.100.80 > 192.168.1.5.49862: P 1:342(341) ack 339 win 256
14:35:39.603046 IP 192.168.1.5.49862 > 192.168.1.100.80: . ack 342 win 4721
14:35:39.643860 IP 192.168.1.5.49862 > 192.168.1.100.80: P 339:658(319) ack 342 win 4721
14:35:39.646180 IP 192.168.1.100.80 > 192.168.1.5.49862: P 342:1747(1405) ack 658 win 255
14:35:39.646207 IP 192.168.1.5.49862 > 192.168.1.100.80: . ack 1747 win 6126
14:35:39.653066 IP 192.168.1.5.49862 > 192.168.1.100.80: P 658:1007(349) ack 1747 win 6126
14:35:39.655978 IP 192.168.1.100.80 > 192.168.1.5.49862: P 1747:3152(1405) ack 1007 win 254
14:35:39.655997 IP 192.168.1.5.49862 > 192.168.1.100.80: . ack 3152 win 7531
14:35:39.656046 IP 192.168.1.5.49863 > 192.168.1.100.80: S 2540359239:2540359239(0) win 4380 <msg 1460,nop,wscale 0,ackOK,eol>
14:35:39.658047 IP 192.168.1.100.80 > 192.168.1.5.49863: S 1370955968:1370955968(0) ack 2540359240 win 8192 <msg 1460,nop,wscale 2,nop,nop,ackOK>
14:35:39.658063 IP 192.168.1.5.49863 > 192.168.1.100.80: . ack 1 win 4380
14:35:39.658986 IP 192.168.1.5.49862 > 192.168.1.100.80: P 1007:1356(349) ack 3152 win 7531
14:35:39.660051 IP 192.168.1.100.80 > 192.168.1.5.49862: P 3152:4557(1405) ack 1356 win 252
14:35:39.660066 IP 192.168.1.5.49862 > 192.168.1.100.80: . ack 4557 win 8936
14:35:44.641402 IP 192.168.1.5.49863 > 192.168.1.100.80: F 1:1(0) ack 1 win 4380
14:35:44.643048 IP 192.168.1.100.80 > 192.168.1.5.49863: R 1:1(0) ack 2 win 0
```

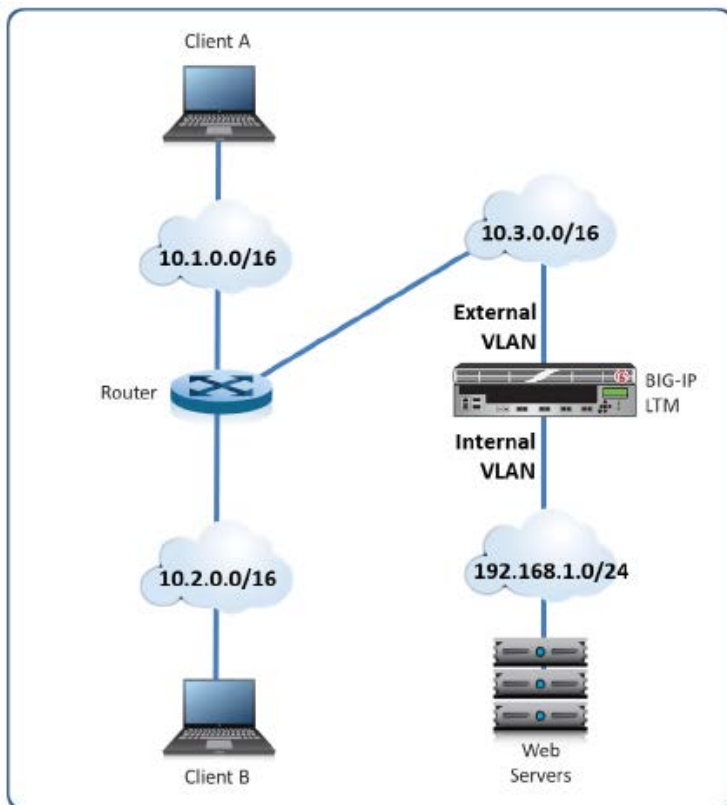
PACKET CAPTURE THROUGH LTM DEVICE - TRYING TO CONNECT DIRECTLY TO SERVER

EXTERNAL VLAN

```
14:32:49.057947 IP 10.1.5.100.49855 > 192.168.1.10.80: S 3803879960:3803879960(0) win 8192 <msg 1460,nop,wscale 2,nop,nop,ackOK>
14:32:49.299299 IP 10.1.5.100.49856 > 192.168.1.10.80: S 2318792924:2318792924(0) win 8192 <msg 1460,nop,wscale 2,nop,nop,ackOK>
14:32:52.077069 IP 10.1.5.100.49855 > 192.168.1.10.80: S 3803879960:3803879960(0) win 8192 <msg 1460,nop,wscale 2,nop,nop,ackOK>
14:32:52.208620 IP 10.1.5.100.49856 > 192.168.1.10.80: S 2318792924:2318792924(0) win 8192 <msg 1460,nop,wscale 2,nop,nop,ackOK>
14:32:58.092918 IP 10.1.5.100.49855 > 192.168.1.10.80: S 3803879960:3803879960(0) win 8192 <msg 1460,nop,nop,ackOK>
14:32:58.312932 IP 10.1.5.100.49856 > 192.168.1.10.80: S 2318792924:2318792924(0) win 8192 <msg 1460,nop,nop,ackOK>
```

INTERNAL VLAN

```
14:32:49.058417 IP 10.1.3.100.49855 > 192.168.1.10.80: S 3803879960:3803879960(0) win 8192 <msg 1460,nop,wscale 2,nop,nop,ackOK>
14:32:49.299448 IP 10.1.5.100.49856 > 192.168.1.10.80: S 2318792924:2318792924(0) win 8192 <msg 1460,nop,wscale 2,nop,nop,ackOK>
14:32:52.077090 IP 10.1.5.100.49855 > 192.168.1.10.80: S 3803879960:3803879960(0) win 8192 <msg 1460,nop,wscale 2,nop,nop,ackOK>
14:32:52.208656 IP 10.1.5.100.49856 > 192.168.1.10.80: S 2318792924:2318792924(0) win 8192 <msg 1460,nop,wscale 2,nop,nop,ackOK>
14:32:58.092936 IP 10.1.5.100.49855 > 192.168.1.10.80: S 3803879960:3803879960(0) win 8192 <msg 1460,nop,nop,ackOK>
14:32:58.312960 IP 10.1.5.100.49856 > 192.168.1.10.80: S 2318792924:2318792924(0) win 8192 <msg 1460,nop,nop,ackOK>
```



-- Exhibit --

Refer to the exhibits.

Users are able to access the application when connecting to the virtual server but are unsuccessful when connecting directly to the application servers. The LTM Specialist wants to allow direct access to the application servers. Why are users unable to connect directly to the application servers?

- A. The router does NOT have a route to the server subnet.
- B. The web server does NOT have a correct default gateway.
- C. The LTM device does NOT have a SNAT on the External VLAN.
- D. The LTM device does NOT have an IP Forwarding virtual server on the Internal VLAN.
- E. The LTM device does NOT have an IP Forwarding virtual server on the External VLAN.

Answer: B

QUESTION: 40

-- Exhibit --

PACKET CAPTURE AT LTM DEVICE - CONNECTING TO VIRTUAL SERVER

EXTERNAL VLAN

```
16:01:29.356966 IP 10.1.5.100.49885 > 10.3.20.20.80: S 2686165014:2686165014(0) win 8192 <msg 1460,nop,wscale 2,nop,nop,ackOK>
16:01:29.357793 IP 10.3.20.20.80 > 10.1.5.100.49885: S 1853772182:1853772182(0) ack 2686165015 win 4380 <msg 1460,nop,wscale 0,ackOK,eol>
16:01:29.359987 IP 10.1.5.100.49885 > 10.3.20.20.80: . ack 1 win 16425
16:01:29.361309 IP 10.1.5.100.49885 > 10.3.20.20.80: F 1:339(338) ack 1 win 16425
16:01:29.361327 IP 10.3.20.20.80 > 10.1.5.100.49885: . ack 339 win 4718
16:01:29.367040 IP 10.3.20.20.80 > 10.1.5.100.49885: P 1:342(341) ack 339 win 4718
16:01:29.523013 IP 10.1.5.100.49885 > 10.3.20.20.80: P 339:658(319) ack 342 win 16339
16:01:29.523067 IP 10.3.20.20.80 > 10.1.5.100.49885: . ack 658 win 5037
16:01:29.526066 IP 10.3.20.20.80 > 10.1.5.100.49885: P 342:1747(1405) ack 658 win 5037
16:01:29.544197 IP 10.1.5.100.49886 > 10.3.20.20.80: S 2661471084:2661471084(0) win 8192 <msg 1460,nop,wscale 2,nop,nop,ackOK>
16:01:29.544330 IP 10.3.20.20.80 > 10.1.5.100.49886: S 4091779980:4091779980(0) ack 2661471085 win 4380 <msg 1460,nop,wscale 0,ackOK,eol>
16:01:29.544319 IP 10.1.5.100.49885 > 10.3.20.20.80: P 658:1007(349) ack 1747 win 16425
16:01:29.544329 IP 10.3.20.20.80 > 10.1.5.100.49885: . ack 1007 win 5386
16:01:29.547133 IP 10.1.5.100.49886 > 10.3.20.20.80: . ack 1 win 16425
16:01:29.547026 IP 10.3.20.20.80 > 10.1.5.100.49885: P 1747:3152(1405) ack 1007 win 5386
16:01:29.575235 IP 10.1.5.100.49885 > 10.3.20.20.80: P 1007:1356(349) ack 3152 win 16073
16:01:29.575262 IP 10.3.20.20.80 > 10.1.5.100.49885: . ack 1356 win 5735
16:01:29.576974 IP 10.3.20.20.80 > 10.1.5.100.49885: P 3152:4557(1405) ack 1356 win 5735
16:01:29.797914 IP 10.1.5.100.49885 > 10.3.20.20.80: . ack 4557 win 16425
```

INTERNAL VLAN

```
16:01:29.360061 IP 192.168.1.5.49885 > 192.168.1.100.80: S 895389186:895389186(0) win 4380 <msg 1460,nop,wscale 0,ackOK,eol>
16:01:29.364886 IP 192.168.1.100.80 > 192.168.1.5.49885: S 1666047010:1666047010(0) ack 895389187 win 8192 <msg 1460,nop,wscale 8,nop,nop,ackOK>
16:01:29.365020 IP 192.168.1.5.49885 > 192.168.1.100.80: . ack 1 win 4380
16:01:29.365031 IP 192.168.1.5.49885 > 192.168.1.100.80: P 1:339(338) ack 1 win 4380
16:01:29.366981 IP 192.168.1.100.80 > 192.168.1.5.49885: P 1:342(341) ack 339 win 256
16:01:29.367073 IP 192.168.1.5.49885 > 192.168.1.100.80: . ack 342 win 4721
16:01:29.523081 IP 192.168.1.5.49885 > 192.168.1.100.80: P 339:658(319) ack 342 win 4721
16:01:29.526009 IP 192.168.1.100.80 > 192.168.1.5.49885: P 342:1747(1405) ack 658 win 256
16:01:29.526074 IP 192.168.1.5.49885 > 192.168.1.100.80: . ack 1747 win 6126
16:01:29.544329 IP 192.168.1.5.49885 > 192.168.1.100.80: P 658:1007(349) ack 1747 win 6126
16:01:29.547230 IP 192.168.1.5.49886 > 192.168.1.100.80: S 1454462415:1454462415(0) win 4380 <msg 1460,nop,wscale 0,ackOK,eol>
16:01:29.546991 IP 192.168.1.100.80 > 192.168.1.5.49885: P 1747:3152(1405) ack 1007 win 254
16:01:29.547056 IP 192.168.1.5.49885 > 192.168.1.100.80: . ack 3152 win 7531
16:01:29.549134 IP 192.168.1.100.80 > 192.168.1.5.49886: S 786849220:786849220(0) ack 1454462416 win 8192 <msg 1460,nop,wscale 8,nop,nop,ackOK>
16:01:29.549159 IP 192.168.1.5.49886 > 192.168.1.100.80: . ack 1 win 4380
16:01:29.575259 IP 192.168.1.5.49885 > 192.168.1.100.80: P 1007:1356(349) ack 3152 win 7531
16:01:29.576958 IP 192.168.1.100.80 > 192.168.1.5.49885: P 3152:4557(1405) ack 1356 win 252
16:01:29.576978 IP 192.168.1.5.49885 > 192.168.1.100.80: . ack 4557 win 8936
16:01:34.564453 IP 192.168.1.5.49886 > 192.168.1.100.80: F 1:1(0) ack 1 win 4380
16:01:34.567472 IP 192.168.1.100.80 > 192.168.1.5.49886: R 1:1(0) ack 2 win 0
```

PACKET CAPTURE AT LTM DEVICE - TRYING TO CONNECT DIRECTLY TO SERVER

EXTERNAL VLAN

```
16:02:26.047441 IP 10.1.5.100.49887 > 192.168.1.10.80: S 4152930596:4152930596(0) win 8192 <msg 1460,nop,wscale 2,nop,nop,ackOK>
16:02:26.285979 IP 10.1.5.100.49888 > 192.168.1.10.80: S 1315604102:1315604102(0) win 8192 <msg 1460,nop,wscale 2,nop,nop,ackOK>
16:02:29.048674 IP 10.1.5.100.49887 > 192.168.1.10.80: S 4152930596:4152930596(0) win 8192 <msg 1460,nop,wscale 2,nop,nop,ackOK>
16:02:29.283160 IP 10.1.5.100.49888 > 192.168.1.10.80: S 1315604102:1315604102(0) win 8192 <msg 1460,nop,wscale 2,nop,nop,ackOK>
16:02:35.065086 IP 10.1.5.100.49887 > 192.168.1.10.80: S 4152930596:4152930596(0) win 8192 <msg 1460,nop,nop,ackOK>
16:02:35.298372 IP 10.1.5.100.49888 > 192.168.1.10.80: S 1315604102:1315604102(0) win 8192 <msg 1460,nop,nop,ackOK>
```

INTERNAL VLAN

<no packets captured>

-- Exhibit --

Refer to the exhibits.

Users are able to access the application when connecting to the virtual server but are unsuccessful when connecting directly to the application servers. The LTM Specialist wants to allow direct access to the application servers. Which configuration change resolves this problem?

- A. Enable port 443 on the virtual server.
- B. Configure a SNAT pool on the LTM device.
- C. Disable address translation on the virtual server.
- D. Configure an IP Forwarding virtual server on the LTM device.
- E. Configure a route to the web server subnet on the network router.

Answer: D



SAMPLE QUESTIONS

*These questions are for demo purpose only. **Full version** is up to date and contains actual questions and answers.*

Killexams.com is an online platform that offers a wide range of services related to certification exam preparation. The platform provides actual questions, exam dumps, and practice tests to help individuals prepare for various certification exams with confidence. Here are some key features and services offered by Killexams.com:

Actual Exam Questions: *Killexams.com provides actual exam questions that are experienced in test centers. These questions are updated regularly to ensure they are up-to-date and relevant to the latest exam syllabus. By studying these actual questions, candidates can familiarize themselves with the content and format of the real exam.*

Exam Dumps: *Killexams.com offers exam dumps in PDF format. These dumps contain a comprehensive collection of questions and answers that cover the exam topics. By using these dumps, candidates can enhance their knowledge and improve their chances of success in the certification exam.*

Practice Tests: *Killexams.com provides practice tests through their desktop VCE exam simulator and online test engine. These practice tests simulate the real exam environment and help candidates assess their readiness for the actual exam. The practice tests cover a wide range of questions and enable candidates to identify their strengths and weaknesses.*

Guaranteed Success: *Killexams.com offers a success guarantee with their exam dumps. They claim that by using their materials, candidates will pass their exams on the first attempt or they will refund the purchase price. This guarantee provides assurance and confidence to individuals preparing for certification exams.*

Updated Content: *Killexams.com regularly updates its question bank and exam dumps to ensure that they are current and reflect the latest changes in the exam syllabus. This helps candidates stay up-to-date with the exam content and increases their chances of success.*

Technical Support: *Killexams.com provides free 24x7 technical support to assist candidates with any queries or issues they may encounter while using their services. Their certified experts are available to provide guidance and help candidates throughout their exam preparation journey.*

For More exams visit <https://killexams.com/vendors-exam-list>
Kill your exam at First Attempt....Guaranteed!